



Cat.6A Inline Coupler, Shielded

Art no.: NP0067

Technical Features

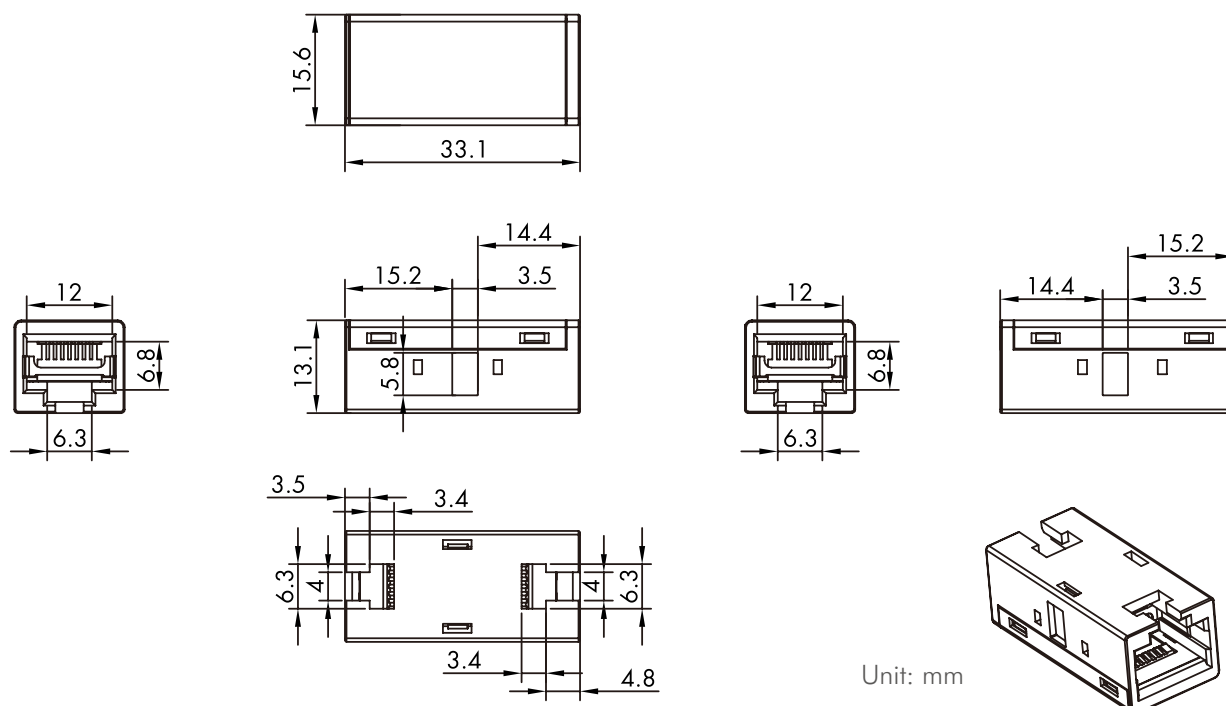
Cat.6A Class EA 10G 500 MHz

8P IP20 RJ45 coupler

360° fully shielded

Metal housing

Technical Drawing



NP0067



4 052792 076370

Made in China

www.2direct.de



*The specifications and pictures are subject to change without prior notice.
*All trade names referenced are the registered trademarks of their respective owners.

Package Content

Cat.6A Inline Coupler x 1

Packaging Information

Packing Dimension	100 x 83 x 15 mm
Packing Weight	0.0205 kg
Carton Dimension	350 x 260 x 280 mm
Carton Q'ty	500 pcs
Carton Weight	10.7 kg



*The specifications and pictures are subject to change without prior notice.
*All trade names referenced are the registered trademarks of their respective owners.