



Mini Emergency Magnetic LED Light

Art no.: PWR121

Technical Features

Flexible and compact design using magnets

Strong swiveling magnetic holder for secure mounting; universal alignment magnets fixed on stainless steel brackets

Easy Installation; lighting can be installed on the surface of any iron body material and can be adjusted to lighting angles with a scope of 360 degrees

Excellent heat dissipation capability

Energy saving high light intensity

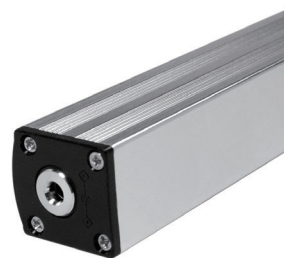
Color: Black plastic & grey aluminum

With on/off switch button

For indoor use only

Power via battery 1800mAh

Charging via USB power



PWR121



4 052792 048490

Made in China

www.logilink.de



RoHS
compliant



* The specifications and pictures are subject to change without notice.
*All trade names referenced are the registered trademark of their respective owners.

Specifications

Housing Material	Aluminum body, Plastic terminal caps
Color Temperature/CCT	6000 ~ 6500K cold white
Color Rendering Index	Ra>80
Input Voltage	DC 5V, 500mA
Power Consumptions	1.5W
Emergency Battery	18650 lithium battery, 1800mAh (Power supply via integrated battery (operating time ca. 4 hours))
Lumens	> 150 lm
Operating Temperature	-20 ~ 45° C
Storage Temperature	-40 ~ 85° C
Function Button	On/off and dimming luminance
Product Dimension	235 (L) X 21 (W) x 23.4(H) mm

Package Contents

1 x Mini Emergency Magnetic LED Light

1 x USB Charging Cable

Packaging Informations

Packing Dimension	285 x 60 x 40mm
Packing Weight	0.27kg
Carton Dimension	555 x 325 x 220mm
Carton Q'ty	50pcs
Carton Weight	13kg



PWR121



4 052792 048490

Made in China

www.logilink.de



RoHS
compliant



* The specifications and pictures are subject to change without notice.
*All trade names referenced are the registered trademark of their respective owners.